



Reimbursement Review

Regorafenib (N/A)

Draft Review Report

Requester: Public drug programs

Therapeutic area: Osteosarcoma

- **Canada's Drug Agency** (CDA-AMC) is a pan-Canadian health organization. Created and funded by Canada's federal, provincial, and territorial governments, we're responsible for driving better coordination, alignment, and public value within Canada's drug and health technology landscape. We provide Canada's health system leaders with independent evidence and advice so they can make informed drug, health technology, and health system decisions, and we collaborate with national and international partners to enhance our collective impact.
- **Disclaimer:** CDA-AMC has taken care to ensure that the information in this document was accurate, complete, and up to date when it was published, but does not make any guarantee to that effect. Your use of this information is subject to this disclaimer and the Terms of Use at cda-amc.ca.
- The information in this document is made available for informational and educational purposes only and should not be used as a substitute for professional medical advice, the application of clinical judgment in respect of the care of a particular patient, or other professional judgments in any decision-making process. You assume full responsibility for the use of the information and rely on it at your own risk.
- CDA-AMC does not endorse any information, drugs, therapies, treatments, products, processes, or services. The views and opinions of third parties published in this document do not necessarily reflect those of CDA-AMC. The copyright and other intellectual property rights in this document are owned by the Canadian Agency for Drugs and Technologies in Health (operating as CDA-AMC) and its licensors.
- Questions or requests for information about this report can be directed to Requests@CDA-AMC.ca.

DRUG

Key Messages

What is Metastatic Osteosarcoma?

- Bone tumours account for less than 1% of diagnosed cancers every year.
- Osteosarcoma is one of the most common primary bone tumours. Metastatic osteosarcoma has spread from the bone in which the cancer began to other parts of the body.
- Patients who present with metastatic disease at diagnosis or develop metastases during or after therapy have very poor outcomes with little chance of cure, averaging less than 20% at 5 years.

What are the Treatment Goals and Current Treatment Options for Metastatic Osteosarcoma?

- The goals of treatments for metastatic osteosarcoma are to improve symptoms, delay disease progression, and prolong life.
- Treatment typically includes cytotoxic chemotherapy in combination with surgery to remove the primary tumour.
- Patients with metastatic disease who progress after initial chemotherapy, have few treatment options, mainly other systemic treatments.

What is Regorafenib and Why Did We Conduct This Review?

- Regorafenib is a type of targeted drug called a cancer growth blocker (receptor tyrosine kinase inhibitor) and is available as an oral tablet. Health Canada has approved regorafenib for colorectal, gastrointestinal and liver cancers. For patients with osteosarcoma regorafenib has been available through a manufacturer special access program which will shortly be ended.
- At the request of the participating public drug programs, we reviewed regorafenib to inform a recommendation on whether it should be reimbursed by public drug plans for patients with metastatic osteosarcoma who have had at least one prior systemic therapy.

How Did We Evaluate Regorafenib?

- We reviewed the clinical evidence on the beneficial and harmful effects and compared costs of regorafenib versus other treatments used in Canada for patients with metastatic osteosarcoma. Ifosfamide with or without etoposide, cyclophosphamide and topotecan, and gemcitabine with or without docetaxel were considered relevant treatments to compare with regorafenib.
 - The clinical evidence was identified through systematic searches for available studies.
 - The review was also informed by 1 patient group submission, and 1 clinician group submission, in response to our call for input and by input from the participating public drug programs around issues that may impact their ability to implement a recommendation. We consulted two medical oncologists as part of the review process.

What Did We Find?

Clinical Evidence

- We reviewed two randomized controlled phase II trial (REGOBONE, SARC024) comparing regorafenib with placebo in patients with metastatic osteosarcoma who had received at least one line of systemic therapy.
- The results suggest a benefit of regorafenib for prolonging the time from treatment until disease worsening or death.
- There was no clear benefit of regorafenib in extending life.
- There were no reported data to assess the effect of regorafenib on quality of life.
- Regorafenib leads to a higher frequency of adverse events.

- Lack of data on the efficacy and safety of regorafenib in patients younger than 18 years old and compared to other current treatment options are key evidence gaps.

Economic Evidence

- Reimbursing regorafenib for the treatment of adult and pediatric patients with metastatic osteosarcoma who have received and progressed on at least 1 prior line of therapy is expected to increase costs to the public drug programs.

Draft

Table of Contents

Key Messages	3
What is Metastatic Osteosarcoma?	3
What are the Treatment Goals and Current Treatment Options for Metastatic Osteosarcoma? ...	3
What is Regorafenib and Why Did We Conduct This Review?	3
How Did We Evaluate Regorafenib?	3
What Did We Find?	3
List of Tables	6
List of Figures	6
Abbreviations	7
Background	8
Introduction.....	8
Disease Background	9
Current Management	9
Unmet Needs and Existing Challenges	10
Considerations for Using the Drug Under Review	10
Clinical Review	12
Methods.....	12
Clinical Evidence	12
Discussion	24
Conclusion.....	25
Economic Review	Error! Bookmark not defined.
References	27

List of Tables

Table 1: Information on the Drug Under Review and on the CDA-AMC Review	8
Table 2: Systematic Review Eligibility Criteria.....	12
Table 3: Characteristics of Included Studies	14
Table 4: Baseline Characteristics - REGOBONE	16
Table 5: Baseline Characteristics – SARC024	17
Table 6: Efficacy Outcomes - REGOBONE.....	23
Table 7: Harms – SARC024	24

List of Figures

Figure 1: Progression-Free Survival – REGOBONE.....	20
Figure 2: Progression-Free Survival - SARC024.....	21
Figure 3: Overall Survival – REGOBONE	22
Figure 4: Overall Survival - SARC024	22

Draft

Abbreviations

AE	adverse event
CI	confidence interval
ECOG	Eastern Cooperative Oncology Group
HRQoL	Health-related Quality of Life
ITT	intention to treat
PFS	progression-free survival
OS	overall survival
RCT	randomized controlled trial
SAE	serious adverse event
SD	standard deviation

Draft

Background

Introduction

The objective of the Clinical Review is to review and critically appraise the evidence on the beneficial and harmful effects of regorafenib 160 mg tablets for oral administration in the treatment of patients with metastatic osteosarcoma who have received at least 1 prior line of therapy. The focus will be placed on comparing regorafenib to relevant comparators and identifying gaps in the current evidence. The economic review consists of a cost comparison for regorafenib compared with relevant comparators for the same population. The comparators considered relevant to the reviews were placebo, and chemotherapeutic agents (ifosfamide with or without etoposide, cyclophosphamide and topotecan, and gemcitabine with or without docetaxel).

Table 1: Information on the Drug Under Review and on the CDA-AMC Review

Item	Description
Information on the drug under review	
Drug (product)	Regorafenib (Stivarga), 40 mg film coated tablets for oral administration
Relevant Health Canada indication	Not applicable
Mechanism of action	Tyrosine kinase inhibitor
Recommended dosage	160 mg daily
Data protection status	Expired 2021-09-11
Patent status	4 patents, expiration dates from 2025-08-29 to 2031-04-08
Status of generic drugs / biosimilars	2 under review
Information on the CDA-AMC review	
Requester	Provincial Advisory Group
Indication under consideration for reimbursement	Metastatic osteosarcoma for patients who have received at least 1 prior line of therapy

Sources of Information

The contents of the Clinical Review report are informed by studies identified through systematic literature searches and input received from interested parties.

Calls for patient group, clinician group, and industry input are issued for each Non-sponsored Reimbursement Review. We received two patient group submissions from the Sarcoma Cancer Foundation of Canada, and Advocacy for Canadian Childhood Oncology Research Network (Ac2orn) and one clinician group submission from the Pediatric Oncology Group of Ontario. Sarcoma Cancer Foundation of Canada gathered information by sharing an e-survey to a targeted group followed by one-on-one discussions and interviews with interested participants. Ac2orn conducted short one-on-one interviews with families to collect first-hand experiences with regorafenib. The clinician group used a consultative process seeking input from pediatric sarcoma experts in Ontario. The full submissions received are available on the project landing page in the consolidated input document. [<insert hyperlink or citation to project landing page>](#).

Input from patient and clinician groups is considered throughout the review, including in the selection of outcomes to include in the Clinical Review and in the interpretation of the clinical evidence. Relevant patient and clinician group input and industry input is summarized in the Disease Background, Current Management, and Unmet Needs and Existing Challenges sections.

The drug programs provide input on each drug being reviewed through the Reimbursement Review process by identifying issues that may impact their ability to implement a recommendation. The implementation questions and corresponding responses from the clinical experts consulted for this review are summarized and provided to the expert committee in a separate document.

Each review team includes at least 1 clinical specialist with expertise regarding the diagnosis and management of the condition for which the drug is indicated. Clinical experts are a critical part of the review team and are involved in all phases of the review process. Two specialists with expertise in the diagnosis and management of osteosarcoma participated as part of the review team, with representation from Manitoba and Alberta.

Disease Background

Bone cancers are relatively rare, accounting for less than 1% of diagnosed cancers every year.¹ There are three kinds of primary bone cancers: osteosarcoma, Ewing sarcoma and chondrosarcoma.² Osteosarcoma is the most common- it starts in new tissue in growing bones of children and adolescents, most often in the knee or upper arm areas. In older patients it may arise in the axial skeleton often complicating Paget's disease. The age at incidence of osteosarcoma diagnosis is bimodal with a primary peak in adolescence and early adulthood (15 to 20 years old) and a second, smaller peak in the seventh and eighth decades of life; with incidence rates of approximately 8 and 6 cases per million person-years, respectively.³ The peak in incidence at the time of adolescence and young adulthood is often attributed to the hormonal changes that occur during puberty.⁴ In adults (Over 40 years) and the elderly (over 60 years) osteosarcoma tends to occur secondary to other conditions such as Paget disease of the bone, as secondary to other benign bone conditions or as a late effect of radiation therapy.⁴ The key pathophysiological mechanism involves several possible genetic drivers of disease linked to bone formation, causing malignant progression and metastasis. The underlying symptoms of osteosarcoma are bone pain that varies depending on the size and location of the tumour in the bone, a swelling in the area of the tumour, broken bone, and decreased mobility and problems moving the joint in the area. The diagnosis of osteosarcoma is made following the biopsy of a mass located most commonly at the metaphysis of the long bones. Approximately 80% of patients with osteosarcoma present with radiographically localized disease. Those patients with radiographically confirmed non-metastatic osteosarcoma have a 5-year event-free survival of about 60%. In those who present with a primary lesion and an isolated pulmonary nodule, 5-year event-free survival is less than 20%.⁵

Current Management

Treatment Goals

In their input, the patient group noted that osteosarcoma is often a debilitating cancer with extreme pain, immobility and other symptoms. The severe symptoms often cause patients to become unable to work and participate in day to day activities, unable to sleep and ultimately unable to support themselves and maintain independence. Osteosarcoma is often associated with severe pain, and because it can develop anywhere in the body, surgical treatment can result in severe consequences, including limb loss and other long-term effects. The input from both patient groups highlighted the significant challenges faced by often young patients after getting a diagnosis of osteosarcoma and the importance of accessible treatments that prioritize quality of life for both patients and their families. The clinical experts also indicated that the main treatment goals in patients with metastatic osteosarcoma are to alleviate symptoms and improve quality of life, delay disease progression, and extend survival.

Current Treatment Options

Treatment of osteosarcoma typically includes cytotoxic neoadjuvant and adjuvant chemotherapy in combination with surgical resection of the primary tumor. According to the input provided by the clinician group, despite multiple clinical trials aimed at improving survival, the current standard of care usually used in the first line setting remains MAP chemotherapy (methotrexate, doxorubicin, and cisplatin) – the same drug combination that has been used for the last 30 years. In the second line of treatment, ifosfamide and etoposide are commonly used. When these options are exhausted, third-line treatments and beyond may include other chemotherapy combinations such as docetaxel and gemcitabine. However, the response rates to these treatments are generally low, and provide only temporary relief.

Key characteristics of regorafenib are summarized with other treatments available for metastatic osteosarcoma in the Supplemental Material document, in the Key Characteristics table in Appendix 1.

Unmet Needs and Existing Challenges

Although surgery combined with cytotoxic chemotherapy has significantly increased the chances of cure, recurrent and refractory disease still impose a tough therapeutic challenge. The clinician group noted that while patients presenting with localized osteosarcoma have an expected overall survival approaching 80%, those who present with metastatic disease at diagnosis or develop metastases during or after therapy have very poor outcomes with any chance of cure remote, averaging less than 20% at 5 years. While metastasectomy can be a viable and potentially curative option for some patients, particularly those with limited pulmonary metastases and a long disease-free interval, most patients must rely on second-line systemic therapy. This therapy primarily aims to prolong life rather than cure the disease. Second-line therapies typically use a variety of cytotoxic agents, include ifosfamide and etoposide, gemcitabine and docetaxel, and cyclophosphamide and topotecan. Currently, there is no standardized treatment options for second line chemotherapy or the use of investigational drugs. The clinician input noted that these regimens generally have modest efficacy and require multiple intravenous infusions, either in clinics or as inpatients with multiple and/or prolonged hospital visits. Furthermore, they carry significant risks of infection and the need for blood product support, requiring additional clinic visits and potentially hospitalizations and cause significant negative impact on quality of life due to hair loss, nausea/vomiting, fatigue, immunosuppression, and need for intensive supportive care associated with cytotoxic chemotherapy. The patient group input from patients noted the challenges of further chemotherapy and hospitalizations and indicated that regorafenib treatment enabled patients to spend more time outside the hospital with their families. One caregiver interviewed by Ac2orn said that 'although it's unclear if regorafenib extended her 15-year-old daughter's life it gave her the opportunity to pursue dreams and moments that mattered most to her'.

The clinician group noted that regorafenib has several benefits that help address the large unmet need for effective and well-tolerated therapies for relapsed/progressive advanced osteosarcoma. According to clinician input, regorafenib is an oral agent with documented benefit at delaying progression, requires no planned hospital visits/admissions, carries little to no risk of infection or need for blood transfusions related to cytopenias. Importantly, it enhances the quality of life for patients with otherwise poor prognosis through improved disease control, minimization of adverse effects from therapy, and convenient oral administration. Regorafenib is expected to represent a treatment option that is better tolerated than available second-line therapies, is associated with improved compliance (especially in adolescents), and is far more convenient than intravenous therapy administered in hospital.

The clinical experts consulted by CDA-AMC noted that most jurisdictions in Canada only have access to cytotoxic chemotherapy as first or later lines of therapy (cisplatin, doxorubicin, methotrexate, gemcitabine, docetaxel, ifosfamide, etoposide). Targeted therapies especially TKIs are not available. TKIs like regorafenib have a unique mechanism of action that fills an unmet need with an added advantage that it is an oral drug with easy administration. Furthermore, regorafenib can be used in patients who cannot tolerate the side effects of cytotoxic chemotherapy, particularly myelosuppression.

Considerations for Using the Drug Under Review

Contents within this section have been informed by input from the clinical experts consulted for the purpose of this review and from clinician groups. The following has been summarized by the review team.

Place in Therapy

The clinical experts consulted indicated that all patients should have previously failed or shown intolerance to treatment with doxorubicin and cisplatin. Regorafenib targets angiogenesis which is not a mechanism targeted by standard chemotherapy drugs. No drugs targeting angiogenesis are currently approved for osteosarcoma in Canada. The clinical experts noted that regorafenib after first line chemotherapy would not be a shift in current treatment paradigm but represents a good option to preserve patient quality of life as compared to further treatment with cytotoxic agents. Regorafenib would not replace any existing second line options but would be considered as additional therapy after first line chemotherapy. For most patients this treatment can be considered as

palliative treatment. Regorafenib would be best used as second line therapy after chemotherapy after chemotherapy. Most patients would not get a chance to try more treatments due to disease progression and rapid decline of functional status so it is best used after first line systemic treatment.

The clinician group indicated that clinicians treating patients with osteosarcoma consider regorafenib as a first-line therapy option following first relapse or progression. They further noted that regorafenib can be offered as maintenance therapy for high-risk patients completing first-line upfront therapy who are not eligible for clinical trials evaluating maintenance therapy in osteosarcoma.

Patient Population

The clinical experts indicated that any patient with conventional osteosarcoma age 10 years and older should be eligible for treatment with regorafenib after failure or intolerance to cisplatin and doxorubicin alone or in combination. Regorafenib is only given when patient have stage IV disease and only in cases of significant disease progression regardless of symptoms as these patients deteriorate quite rapidly if we rapid radiographic disease progression is not treated quickly.

The clinician group indicated that patients with unresectable metastatic osteosarcoma (upfront or at relapse) would be eligible and most likely to benefit from therapy with regorafenib. Since these young patients are otherwise going to die from their disease, they all deserve some form of therapy to help prolong life with good quality. Patients would be identified through routine oncology clinic visits, with baseline investigations including bloodwork and chest imaging (chest xray and CT scan).

Assessing the Response to Treatment

The clinical experts noted that there is no biomarker to predict response, but generally slower growing tumors may respond to TKIs better than faster growing tumors. Symptom improvement would be considered a sign that the patient is responding to treatment. CT of affected organs every 2 to 3 months is reasonable to assess radiologic response.

The clinician group indicated that outcome measures used in clinical trials mirror those employed in clinical practice, including serial CT scan surveillance of lung metastases (i.e., every 12 weeks). The lack of progression on imaging (i.e., by RECIST) and patient reported symptoms (i.e., pain, respiratory distress, hemoptysis) would warrant ongoing therapy. This criterion is standard and consistent across hospitals and oncology physicians.

Discontinuing Treatment

The clinical experts stated obvious disease progression not amenable to local therapies like surgery or radiation and intolerable side effects like hand foot syndrome and mucositis would be reasons to discontinue treatment with regorafenib.

The clinician group also indicated that disease progression and intolerance can lead to discontinuation of regorafenib treatment. They further noted that there is opportunity for dose modification in the setting of toxicity that exceeds grade 3/4 without any documented impact on efficacy. Most patients who develop toxicity can continue treatment with modification of their dose.

Prescribing Considerations

Both the clinical experts and the clinician group indicated that regorafenib should only be initiated under the direction of an oncology team with experience in caring for osteosarcoma and managing adverse side effects. The drug is orally administered at home, and adverse events, including laboratory monitoring, can often be managed with community labs and resources.

Clinical Review

Methods

We conducted a systematic review to identify evidence for regorafenib for the treatment of patients with metastatic osteosarcoma. Studies were selected according to the eligibility criteria in Table 2. We also search for long-term extension studies of included RCTs, indirect treatment comparisons (ITCs) that adhered to the eligibility criteria except for the study design criteria, and studies addressing gaps that did not meet the eligibility criteria but were considered to address important gaps in the Systematic Review evidence.

Relevant comparators included treatments used in clinical practice in Canada in the patient population under review. We selected outcomes (and follow-up times) for review considering clinical expert input, and patient and clinician group inputs. Selected outcomes are those considered relevant to expert committee deliberations. Detailed methods for literature searches, study selection and data extraction are in Supplemental Material in Appendix 2.

Table 2: Systematic Review Eligibility Criteria

Criteria	Description
Population	Patients (adult and pediatric) with metastatic osteosarcoma who have received and progressed on at least 1 prior line of therapy
Intervention	Regorafenib (160mg orally on days 1 to 21 of each 28-day cycle)
Comparator	<ul style="list-style-type: none"> - Placebo - Other chemotherapeutic agents: <ul style="list-style-type: none"> - ifosfamide with or without etoposide - cyclophosphamide and topotecan - gemcitabine with or without docetaxel
Outcomes	<p>Efficacy outcomes:</p> <ul style="list-style-type: none"> - Progression-free survival - Overall survival - Response on serial imaging - HRQoL (and overall symptoms improvement) <p>Harms outcomes: AEs, SAEs, discontinuation due to AEs, mortality</p>
Study design	Published and unpublished Phase 3 and 4 RCTs. If no Phase 3 or 4 studies are identified, Phase 2 studies or prospective observational studies may be considered.

AE = adverse event; HRQoL = health-related quality of life; SAE = serious adverse event; RCT = randomized controlled trial.

Clinical Evidence

From the search for primary studies, we identified 314 unique records via the searches of databases and registers, of which we excluded 312 by title and abstract. We screened 2 records by full text and included 2 reports of 2 studies.

From the search for ITCs, we identified 579 unique records via the searches of databases and registers, of which we excluded 579 by title and abstract. No potentially relevant ITCs were identified.

Systematic Review

Description of Studies

Detailed characteristics of the included studies (REGOBONE and SARC04) are summarized in Table 3.

REGOBONE

REGOBONE is a phase II, double-blind, randomized placebo-controlled trial designed to assess the efficacy and safety of regorafenib for patients with progressive metastatic osteosarcoma and other bone sarcomas.⁶ The trial was comprised of four parallel independent cohorts of different histological subtypes of metastatic bone cancers (osteosarcoma, Ewing sarcoma, chondrosarcoma, and chordoma). Between Oct 10, 2014, and April 4, 2017, 43 adult patients with histologically confirmed osteosarcoma whose disease had progressed after treatment with one to two previous lines of chemotherapy for metastatic disease not amenable to treatment with curative intent. These patients were enrolled from 13 French comprehensive cancer centres, and were randomly assigned (2:1) to receive either oral regorafenib 160 mg per day (four 40 mg oral tablets, for 21 of 28 days) or matching placebo tablets. Patients in both groups also received best supportive care, —which included any method to preserve the comfort and dignity of the patients and excluded any disease-targeting antineoplastic agent, such as any kinase inhibitor, chemotherapy, radiotherapy, or surgical intervention. The study protocol was amended to allow inclusion of patients aged 10 years and older, however only adult patients could be recruited.

Serial tumour size assessment by CT imaging was done every 4 weeks for the first 4 months and then every 8 weeks (every second cycle) until the end of study treatment. For patients in the placebo group who crossed over to receive open-label regorafenib after centrally confirmed disease progression and unblinding, disease restaging was resumed at the original schedule (i.e., every 4 weeks for the first 4 months, and then every 8 weeks [every second cycle]) until the end of study drug treatment. All patients entered the follow-up period 30 days after discontinuation of study treatment.

The primary endpoint was the proportion of patients without disease progression at 8 weeks. Secondary endpoints included PFS (assessed centrally according to modified RECIST v1.1), objective responses (the proportion of patients who achieved a complete or partial response as their best response since randomization, according to modified RECIST v1.1), and OS (defined as the time from randomization until the date of death from any cause).

SARC024

SARC024 is a phase II, double-blind, randomized placebo-controlled trial of regorafenib in patients with metastatic osteosarcoma carried out across 12 centres in the United States.⁷ Eligible patients were age 10 and older with a diagnosis of advanced or metastatic bone or extraskelatal osteosarcoma, and at least one prior line of systemic therapy in the neoadjuvant, adjuvant, or metastatic setting, and measurable disease by RECIST v 1.1, with evidence of progressive disease within 6 months of enrolment. Patients received either placebo or regorafenib at an initial dose of 160 mg (four 40 mg oral tablets for 21 of 28 days). Patients continued to receive study treatment until either RECIST (version 1.1) progression, more than 28 days elapsed since last dose of study drug, or patient- or physician-initiated discontinuation.

Tumor assessments were performed by the investigators using RECIST v1.1. Baseline study scan was required within 28 days of cycle 1 day 1. Thereafter, tumor assessments were performed every 8 weeks for the first 32 weeks and then every 12 weeks, with a 6 7-day window of the anticipated scan date.

The primary endpoint was median PFS. Secondary end points included incidence of AEs (according to CTCAE version 4.03, overall response rate per RECIST (version 1.1), time to tumor progression, PFS at 8 and 16 weeks, and OS. Additional secondary endpoints included PFS, OS, overall response rate, and time to tumour progression after crossover.

Table 3: Characteristics of Included Studies

Study name Design Sample size	Key eligibility criteria	Intervention and comparator	Endpoints
<p>Duffault, et al (2019)</p> <p>REGOBONE</p> <p>Phase II, multicenter, double-blind, placebo-controlled trial</p> <p>N=43</p>	<ul style="list-style-type: none"> • Age 10 years or older • Adequate performance status (adults: Eastern Cooperative Oncology Group [ECOG] performance status of 0–1; children aged >12 years: a score of ≥60% on the Karnofsky performance scale; children aged ≤12 years a score of ≥60% on the Lansky scale) • Histological diagnosis of osteosarcoma • Objective disease progression within 3 months prior to study entry per RECIST v1.1 • Disease not amenable to treatment with curative intent • Previously treated with 1 to 2 lines of chemotherapy for metastatic disease, with at least 4 weeks since the last chemotherapy (6 weeks in the case of nitrosoureas and mitomycin C), immunotherapy, or any other pharmacological treatment and/or radiotherapy. • a body surface area of at least 1.30 m² • Life expectancy of longer than 3 months • Adequate bone marrow function (absolute neutrophil count ≥1 · 5 × 10⁹ cells/L, platelets ≥100 × 10⁹/L, haemoglobin concentration ≥9 g/dL), normal renal function (serum creatinine ≤1 · 5 × upper limit of normal [ULN], glomerular filtration rate ≥30 mL/min per 1.73 m² according to the modified diet in renal disease abbreviated formula, and normal spot urine analysis), normal liver function (aspartate aminotransferase and alanine aminotransferase ≤2 · 5 × ULN [or ≤5 · 0 × ULN for patients with liver involvement of their cancer], bilirubin ≤1 · 5 × ULN, and alkaline phosphatase ≤2 · 5 × ULN [or ≤5 × ULN in those with liver involvement of their cancer]), and normal pancreatic function (lipase ≤1 · 5 × ULN) 	<p><i>Intervention:</i> best supportive care + regorafenib 160 mg orally per day (4 tablets of 40 mg once daily)</p> <p><i>Comparator:</i> best supportive care + matching placebo tablets</p>	<p><i>Primary endpoint:</i> Proportion of patients without disease progression at 8 weeks</p> <p><i>Secondary endpoints:</i></p> <ul style="list-style-type: none"> • PFS • Objective response • Overall survival • Safety and tolerability
<p>Davis, et al (2019)</p> <p>SARC024</p> <p>Phase II, multicenter, double-blind, placebo-controlled trial</p> <p>N=42</p>	<ul style="list-style-type: none"> • Age 10 years or older • Advanced or metastatic bone or extraskeletal osteosarcoma • Body surface area of 0.65 m² or greater • WHO performance status of 0 to 2 (with prespecified maximum of 16 patients with WHO performance status of 2) • At least one prior line of systemic therapy in the neoadjuvant, adjuvant, or metastatic setting • Adequate organ function • Ability to swallow oral medication 	<p><i>Intervention:</i> regorafenib 160 mg orally per day (4 tablets of 40 mg once daily)</p> <p><i>Comparator:</i> placebo</p>	<p><i>Primary endpoint:</i> PFS (median)</p> <p><i>Secondary endpoints:</i></p> <ul style="list-style-type: none"> • Incidence of AEs • Overall response rate per RECIST (version 1.1) • Time to tumor progression • PFS (at 8 and 16 weeks)

	<ul style="list-style-type: none"> • Measurable disease by RECIST (version 1.1), with evidence of progressive disease within 6 months of enrollment 	<ul style="list-style-type: none"> • OS • PFS, OS, overall response rate, and time to tumour progression after crossover
--	--	--

AE = adverse events; ECOG = Eastern Cooperative Oncology Group; PFS = progression-free survival; OS = overall survival; ULN = upper limit of normal.
Source: Duffaud et al (2019)⁶, Davis et al (2019)⁷.

Statistical Testing and Analysis Populations

REGOBONE

Sample size was calculated by A'Hern single-stage design for phase 2 trials.⁸ The number of patients to include was calculated based on an assumed median PFS of 6 weeks without active treatment and 12 weeks with treatment. No comparative hypothesis was formulated and no statistical comparison between the control and experimental group was planned. The placebo group was only included to check the similarity between the enrolled patients and historical controls with respect to clinical outcome when given standard treatments. Thereby, the primary endpoint and all other efficacy outcomes were analysed among the modified intention to treat population, including all patients who initiated study drug treatment, with no major protocol violations.

The percentages of patients who were progression-free at 8 weeks in each group were calculated with their respective 95% CIs (which were one-sided due to the Fleming design). Progression-free survival and overall survival were estimated using the Kaplan-Meier, and were summarized as medians or timepoint specific probabilities in each arm, along with the corresponding two-sided 95% CIs. For patients who were event free at the time of the analysis, progression-free survival was censored at the date of the final adequate tumour assessment. Overall survival was censored at the date of last contact for patients who were still alive.

SARC024

A sample size consisting of 42 events was needed to detect a between group difference of 3 months in median PFS. The design aimed to achieve 90% power at a 5% one-sided type I error, with an expectation that 48 patients would be sufficient to observe the target number of events. After the release of the REGOBONE trial results, an independent data safety and monitoring recommended closing the study after enrollment of 42 of 48 planned participants and observing 31 of the intended 42 PFS events.

All analyses were conducted in the intention-to-treat (ITT) population. Patients were stratified by WHO performance status (0 to 1 v 2) and by number of prior lines of therapy (one v two or more). Overall survival and PFS were estimated using a Kaplan-Meier estimator, and groups differences were tested using a one-sided stratified log-rank test. Reported P values were not adjusted for multiple comparisons.

Patient Disposition

REGOBONE

Between Oct 10, 2014, and April 4, 2017, 43 adult patients were enrolled from 13 French comprehensive cancer centres and randomly assigned 2:1 to receive regorafenib or placebo. Five patients (2 in the placebo group and 3 in the regorafenib group) had major protocol violations were not included in the full analysis set (no documented progressive disease at inclusion n=4, no measurable lesions at inclusion n=1). Two patients who were initially enrolled in the REGOBONE chondrosarcoma cohort had their diagnoses changed to osteosarcoma after central histological review (one of whom was randomly assigned to regorafenib and the other to placebo); data from both these patients were incorporated into the osteosarcoma cohort. In total, 38 adult patients with histologically confirmed advanced osteosarcoma constituted the population for efficacy analysis: 26 patients randomly assigned to regorafenib and 12 to placebo. Twelve patients discontinued placebo (10 progressions, 1 withdrawal, 1 progression not confirmed). 10 out of 12 patients originally assigned to placebo crossed over to open-label regorafenib. All 12 patients died (11 progressive disease, 1 toxicity -alteration of general state due to cancer). Of the 26 patients initially assigned to regorafenib all 26 stopped the

study (21 deaths due to progressive disease, 5 alive at database lock). No patient remained on treatment at the time of the reported analysis

SARC024

A total of 42 patients were recruited from 12 centres across the United States between September 2014 and May 2018; 22 patients were randomly assigned to regorafenib, and 20 patients were randomly assigned to placebo. In the regorafenib arm 11 patients discontinued treatment due to progressive disease, 3 withdrew consent, 2 discontinued due to intercurrent disease, and 5 discontinued for other reasons. In the placebo arm, 17 patients discontinued treatment due to progressive disease, 1 withdrew consent, and 2 patients discontinued treatment due to other reasons. Ten patients initially assigned to placebo, crossed over to the regorafenib arm upon progression. There were 12 deaths (54%) in the regorafenib arm and 10 (50%) in the placebo arm.

Baseline Characteristics

REGOBONE

The median age of the patients at baseline was 33 years (interquartile range [IQR]: 22 to 50). Baseline characteristics were generally balanced except for age, sex, and ECOG PS. Median age was 32 years in the regorafenib arm and 40 years in the placebo arm. In the regorafenib arm 73% of patients were male, compared to 42% in the placebo arm. In the regorafenib arm 46% had an ECOG PS of 1 versus 17% in the placebo arm. Most patients (79%) had only one previous chemotherapy regimen for metastatic disease at inclusion. Distant metastases were mainly in the lung and bone. Most patients had received the three most common drugs used for treating adults with osteosarcoma; doxorubicin, cisplatin, and ifosfamide. High-dose methotrexate had also been used in 10 (23%) of 43 of the patients overall. At the time of the analysis, the median follow-up of patients who were alive was 31.6 months (IQR: 24.1 to 33.6) (Table 4).

SARC024

The median age was 37 years (range: 18 to 76 years). The majority of patients (78.5%) had osteosarcoma. Baseline characteristics were generally balanced between the arms but were imbalanced in age and sex. Patients in the regorafenib arm were younger (median age: 33 compared to 47 in the placebo arm), and a lower proportion were male (6% vs 14% in the placebo arm) (Table 5).

Table 4: Baseline Characteristics - REGOBONE

	Regorafenib group (n=26)	Placebo group (n=12)	Excluded from efficacy analysis (n=5)
Age, years, median (IQR)	32 (21-50)	40 (29-43)	30 (23-43)
Sex			
Male	19 (73%)	5 (42%)	4 (80%)
Female	7 (27%)	7 (58%)	1 (20%)
ECOG performance status			
0	12 (46%)	2 (17%)	2 (40%)
1	14 (54%)	10 (83%)	2 (40%)
Unknown	0	0	1 (10%)
Presence of metastases			
No (locally advanced disease)	1 (4%)	0	2 (40%)
Yes	25 (96%)	12 (100%)	3 (60%)
Sites of metastases			
Lung	24 (92%)	10 (83%)	2 (40%)
Bone	6 (23%)	3 (25%)	0
Lymph node	3 (12%)	4 (33%)	0

	Regorafenib group (n=26)	Placebo group (n=12)	Excluded from efficacy analysis (n=5)
Pleural	3 (12%)	1 (8%)	0
Previous lines of chemotherapy for metastatic disease			
1	21 (80%)	10 (83%)	3 (60%)
2	5 (20%)	2 (17%)	2 (40%)
0	0	0	0
Previous treatment at entry			
Doxorubicin	26 (100%)	12 (100%)	2 (40%)
Ifosfamide	24 (92%)	12 (100%)	3 (60%)
Cisplatin	25 (96%)	11 (92%)	1 (20%)
High-dose methotrexate	7 (27%)	3 (25%)	0
Etoposide	21 (81%)	5 (42%)	1 (20%)
Gemcitabine or docetaxel	3 (12%)	2 (16%)	0
Oral cyclophosphamide	3 (12%)	1 (8%)	2 (40%)

ECOG = Eastern Cooperative Oncology Group; IQR = interquartile range.

Source: Duffaud et al (2019)⁸

Table 5: Baseline Characteristics – SARC024

Characteristic	All patients (N=42)	Regorafenib (n=22)	Placebo (n=20)
Age, years			
Median	37	33	47
Range	18-76	18-70	19-76
Sex, n			
Male	20	6	14
Female	22	16	6
Previous lines of therapy			
1	21 (50)	11 (50)	10 (50)
>1	21 (50)	11 (50)	10 (50)
WHO performance status			
0-1	41 (98)	22 (100)	19 (95)
2	1 (2)	0 (0)	1 (5)
Primary tumour location			
Extremity	27 (64)	13 (59.1)	14 (70)
Head/neck	7 (17)	3 (13.6)	4 (20)
Pelvis/spine	4 (9.5)	3 (13.6)	1 (5)
Other	4 (9.5)	3 (14.6)	1 (5)
Histology			
Conventional osteosarcoma	33 (78.5)	17 (77.2)	16 (80)
Conventional chondroblastic	15 (36)	7 (31.8)	8 (40)

Characteristic	All patients (N=42)	Regorafenib (n=22)	Placebo (n=20)
Conventional NOS	9 (21)	5 (22.7)	4 (20)
Conventional osteoblastic	5 (12)	3 (13.6)	2 (10)
Conventional osteoblastic and chondroblastic	3 (7)	1 (4.6)	2 (10)
Conventional fibroblastic	1 (2)	1 (4.6)	0 (0)
Other osteosarcoma ^a	4 (9.5)	1 (4.6)	3 (15)
Osteosarcoma NOS	5 (12)	4 (18.2)	1 (5)

NOS = not otherwise specified; WHO = World Health Organization

^a Other osteosarcoma includes juxtacortical, parosteal, and telangiectatic.

Source: Davis et al (2019)⁷

Draft

Critical Appraisal

Internal Validity

In both the REGOBONE and SARC024 trials randomization procedures were appropriate for limiting risk of bias in the randomization process. However, due to the small sample sizes (n= 43, and n=42), there were noticeable differences in prognostic variables, particularly in patients' demographic characteristics (age and sex in both trials and ECOG PS in REGOBONE). Due to the observed imbalances, it is possible that the reported effects are over- or under-estimated and may be an inaccurate estimate of the average treatment effects.

Both trials were phase II signal seeking trials. REGOBONE was designed as a non-comparative trial and did not calculate p-values. Both trials were double blind with patients, caregivers, and trial personnel unaware of treatment assignments, which minimizes the potential for bias due to deviations from intended interventions. The key efficacy outcomes were objective (disease progression, PFS, objective response) so risk of bias in their measurement is unlikely. Both trials followed pre-specified analysis plans with limited evidence of selective reporting of prespecified outcomes. However, the REGOBONE trial lacked prespecified statistical between-group testing, which limits the interpretation of the significance of the reported effect estimates. SARC024 may be underpowered as the study stopped recruiting after the enrollment of 42 of 48 planned participants and 31 of the required 42 PFS events. This was done after the release of the REGOBONE trial results that showed a benefit of regorafenib compared to placebo and concerns regarding continuing enrollment in a placebo-controlled study. Both studies used the Kaplan-Meier method for time to event outcomes (PFS and OS). In both trials, patients crossed over from the placebo arm to the regorafenib arm; the crossover design compromises the ability to assess the long-term efficacy of regorafenib on OS.

External Validity

Both trials included patients with a confirmed diagnosis of metastatic osteosarcoma who had received at least one prior line of systemic therapy. Although both trials allowed the inclusion of patients aged 10 and older, only adult patients could be recruited. The clinical experts consulted by the CDA-AMC indicated that both trial populations were reflective of clinical practice in Canada and further noting that although the trials didn't include pediatric patients, they consider that patients aged 10 and older with metastatic osteosarcoma may be considered for regorafenib treatment. The intervention (regorafenib dose) including the supportive care used in the REGOBONE trial mirror clinical practice. Prior regimens received before enrollment in the trials were also largely representative of clinical practice in Canada. Both trials compared regorafenib to placebo, which was a relevant comparator in this non-curative setting. Most outcomes considered important to the review were reported in the included studies; however, evidence for HRQoL was not measured in either trial. As such, the effect of regorafenib compared to placebo on HRQoL in patients with metastatic osteosarcoma remains unknown.

Results

Efficacy

Results for outcomes important to this review are presented below.

- i. Progression-free survival

REGOBONE

At the time of analysis (after data cutoff on April 18, 2018), all 26 patients in the regorafenib group and all 12 patients in the placebo group had progressed, and 33 of 38 patients (87%) had died (21 of 26 patients [81%] in the regorafenib group vs all 12 [100%] in the placebo group. All but one death was due to disease progression.

Median PFS was 16.4 weeks (95% CI: 8.0 to 27.3) in the regorafenib group and 4.1 weeks (95% CI: 3.0 to 5.7) in the placebo group (Table 6, Figure 1).

Median PFS in the patients who crossed over to regorafenib was 19.4 weeks (95% CI: 3.6 to 27.7), but it is not comparable to other values as treatment crossover was conditional on progression during placebo.

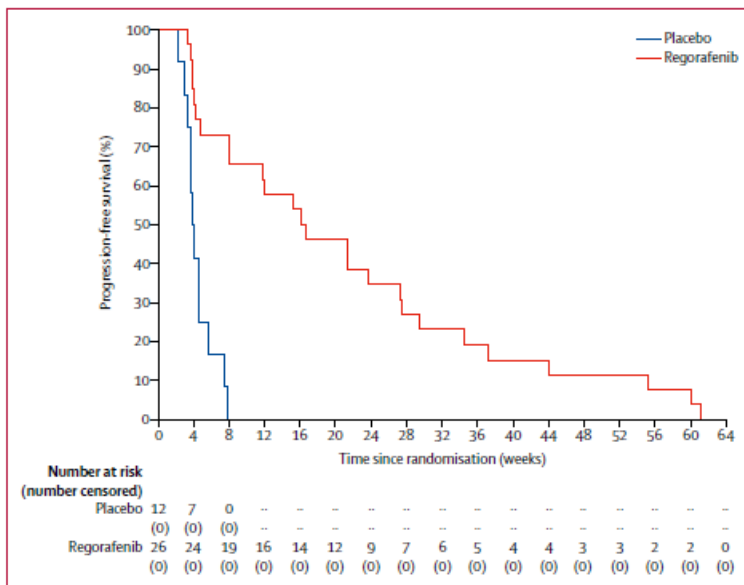
PFS was 62% at 12 weeks and 35% at 24 weeks in the regorafenib group. No patients were progression free at 12 weeks in the placebo group.

SARC024

Median PFS was 3.6 months (95% CI, 2.0 to 7.6 months) for regorafenib and 1.7 months (95% CI, 1.2 to 1.8 months) for placebo (hazard ratio, 0.42; 95% CI, 0.21 to 0.85; P = 0.017) (Figure 2).

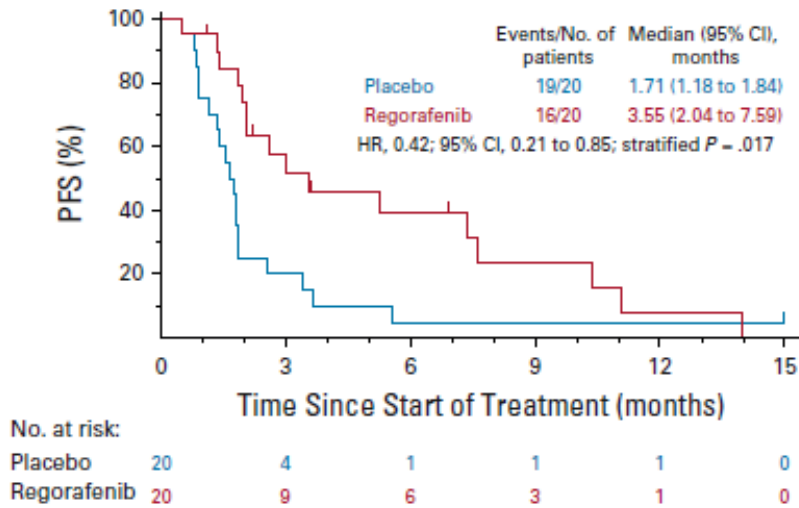
PFS at 8 weeks and 16 weeks was 79.0% and 44.4% for patients receiving regorafenib, respectively, compared with 25.0% (Fisher's exact test P = .001) and 10.0% (Fisher's exact test P = .027) for those who received placebo.

Figure 1: Progression-Free Survival – REGOBONE



Source: Duffaud et al (2019).⁶

Figure 2: Progression-Free Survival - SARC024



CI = confidence interval; PFS = progression-free survival; HR = hazard ratio.
Source: Davis et al (2019)⁷.

ii. Overall survival

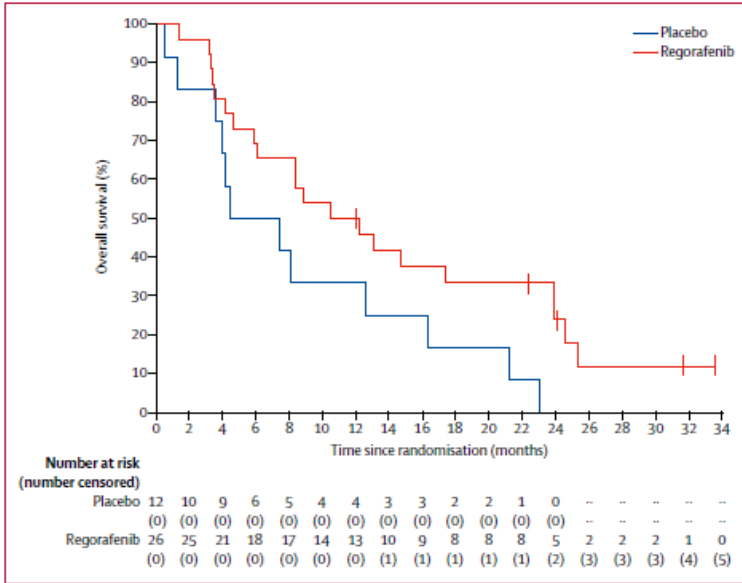
REGOBONE

Median OS was 11.3 months (95% CI: 5.9 to 23.9) in patients who received regorafenib and 5.9 months (95% CI: 1.3 to 16.4) in the placebo group (Figure 3).

SARC024

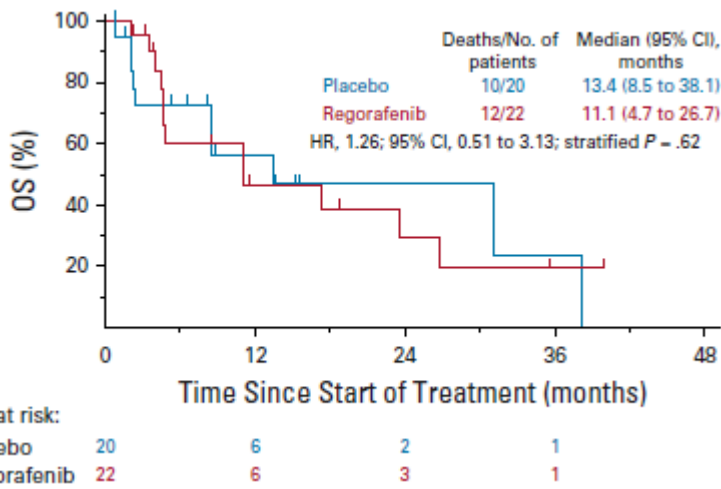
Median OS was 11.1 months (95% CI, 4.7 to 26.7 months) for patients initially randomly assigned to regorafenib and 13.4 months (95% CI, 8.5 to 38.1 months) for patients initially randomly assigned to placebo (hazard ratio, 1.26; 95% CI, 0.51 to 3.13; P = 0.62) (Figure 4).

Figure 3: Overall Survival – REGOBONE



Source: Duffaud et al (2019).⁶

Figure 4: Overall Survival - SARC024



CI = confidence interval; HR = hazard ratio; OS = overall survival.

Source: Davis et al (2019).⁷

Table 6: Efficacy Outcomes - REGOBONE

	Regorafenib group (n=26)	Placebo group (n=12)
Non-progressive disease at 8 weeks	17 (65%; 95% CI 47–) ^a	0
Response at 8 weeks		
Complete response	0	0
Partial response	2 (8%)	0
Stable disease	15 (58%)	0
Progressive disease	9 (35%)	12 (100%)
Median progression-free survival, weeks	16.4 (95% CI: 8.0-27.3)	4.1 (95% CI: 3.0-5.7)
Progression-free survival at 12 weeks	62% (95% CI: 40-77)	0
Progression-free survival at 24 weeks	35% (95% CI: 17-52)	0

^a One sided 95% CI (due to the Fleming design)

Source: Duffaud et al (2019).⁶

iii. Response

REGOBONE

At 8 weeks, 8% of patients had partial response, 58% had stable disease, and 35% had progressive disease in the regorafenib group. All patients randomized to receive placebo had progressive disease (Table 6).

SARC024

Three patients (13.6%) randomly assigned to regorafenib achieved partial response per RECIST (version 1.1). These patients had received one, three, and five lines of prior therapy, respectively. There were no objective responses in the placebo group.

iv. Health-related quality of life

HRQoL was not an endpoint in either trial.

Harms

REGOBONE

- In the safety population, 13 treatment-related SAEs occurred in 7 of 29 patients (24%) in the regorafenib group versus none of 14 patients in the placebo group. All these treatment-related SAEs in the regorafenib group were at least grade 3 severity, and were hypertension (n=3), hypophosphataemia (grade 4; n=1 and grade 3; n=2), hand-foot skin reaction (n=2), transaminases increase (n=1), lipase increase (n=1), blood alkaline phosphatase increase (n=1), epilepsy (n=1), and haemothorax (n=1).
- The most common grade 3 or worse treatment-related AEs during the double-blind period in the regorafenib group included hypertension (in 7 of 29 patients [24%]), hand-foot skin reaction (in 3 patients [10%]), fatigue (in 3 [10%]), hypophosphataemia (in 3 [10%]), and chest pain (in 3 [10%]).
- There were no treatment-related deaths reported in either treatment group.

SARC024

- AEs were more frequent in the regorafenib arm than in the placebo arm; 91% of patients in the regorafenib arm had at least one AE of any grade, compared to 60% of patients in the placebo arm.
- Patients treated with regorafenib experienced hand-foot skin reactions (grade 1 to 2 in seven patients [32%] and grade 3 in one patient [5%] compared with no patients receiving placebo) and GI disorders (grade 1 to 2 in 11 patients [50%] compared with grade 1 to 3 in five patients [25%] receiving placebo).
- Grade 3 hypertension occurred in 3 patients (14%) assigned to regorafenib, with an additional 4 patients (18%) experiencing grade 2 hypertension; 3 patients (15%) receiving placebo experienced grade 1 to 2 hypertension.

Table 7: Harms – SARC024

AE, n (%)	Regorafenib (n=22)		Placebo (n=20)	
	All Grades	Grade ≥ 3	All Grades	Grade ≥ 3
Any	20 (91)	14 (64)	12 (60)	9 (45)
Hand-foot skin reaction	8 (36)	1 (5)	0	0
Hypertension	7 (32)	3 (14)	3 (15)	0
Nausea	5 (23)	0	4 (20)	1 (5)
Diarrhea	4 (18)	1 (5)	0	0
Oral mucositis	3 (14)	0	0	0
Maculopapular rash	3 (14)	2 (9)	0	0
Vomiting	3 (14)	0	1 (5)	1 (5)
Thrombocytopenia	2 (9)	2 (9)	0	0
Hypophosphatemia	2 (9)	2 (9)	1 (5)	1 (5)
Extremity pain	2 (9)	2 (9)	0	0

Source: Davis et al (2019).⁷

Discussion

Efficacy

Data from two similarly designed multicenter, randomized, phase II clinical trials comparing regorafenib to placebo in patients with metastatic osteosarcoma who have received at least one line of prior systemic therapy suggest a benefit of regorafenib in improving PFS. In the REGOBONE trial, which recruited patients out of France, patients had an improved median PFS of 16 (95% CI: 8.0 to 27.3) weeks in the regorafenib arm compared to 4 weeks (95% CI: 3.0 to 5.7) in the placebo arm. However, this study did not include formal statistical between group comparisons. Similarly, the SARC024 trial, which recruited patient out of the United States, showed a median PFS of 3.6 (95% CI: 1.0 to 7.6) months for patients treated with regorafenib, versus 1.7 (95% CI: 1.2 to 1.8) months for the placebo arm (HR: 0.42; 95% CI 0.21–0.85, $p = 0.017$). No significant differences were observed in OS. Of note, the cross over design in both trials compromises an assessment of the effect of regorafenib compared to placebo on long-term OS. In both trials, partial tumour responses to regorafenib were observed in 7.6% and 13.6% of the regorafenib-treated patients in the REGOBONE and SARC024 trial, respectively. The differences in the observed PFS and OS across trials is indicative of a large

heterogeneity in the patient population and introduces uncertainty surrounding the magnitude of effect of regorafenib on treating metastatic osteosarcoma in the Canadian context.

The clinical experts and clinician group indicated that as all treatments in the setting of metastatic disease, treatment goals for patients with metastatic osteosarcoma are to improve symptoms, delay disease progression, improve health related quality of life, and prolong life. The patient and clinician groups highlighted the lack of treatment options other than cytotoxic intravenous treatments after first line chemotherapy and noted that the majority of patients are left with only second line systemic therapy. The authors of the REGOBONE trial highlighted the significance of the 16-week progression-free survival (PFS) observed in the regorafenib treatment group. They deemed this duration clinically important, referencing the Pediatric Oncology Group's guidelines.⁹ According to these guidelines, a PFS longer than 4 months is considered a positive outcome for single-arm phase 2 trials involving patients with measurable metastatic or unresectable osteosarcoma. The clinical experts consulted for this review also considered that the magnitude of the observed effect of regorafenib on PFS represents a clinically improvement in PFS. On the other hand, the two trials do not provide evidence that regorafenib improves OS compared to placebo, as the reported median confidence intervals were large and overlapping. The SARC024 trial showed no difference in median OS and REGOBONE was a non comparative trial, which did not test for significance across treatment arms. In addition, the effect of regorafenib on HRQoL is unknown as this outcome was not measured in either trial.

Both trials compared regorafenib to placebo. In addition to placebo, other relevant comparators of interest for this review, that is treatments that are currently reimbursed by at least one public drug plan in Canada- included ifosfamide with or without etoposide, cyclophosphamide and topotecan, and gemcitabine with or without docetaxel. The lack of evidence comparing regorafenib to these treatment options represents a gap in the evidence. However, these treatment options are cytotoxic intravenous (chemotherapy) treatments. Therefore, for patients who have contraindications to these agents or who cannot tolerate further chemotherapy after first-line chemotherapy, there are no other treatment options. Another gap in the evidence is with respect to the pediatric population as neither of the trials were able to recruit patients under the age of 18 years.

Harms

In both trials, AEs were more frequent among patients treated with regorafenib arm compared to those who received placebo arm. The clinical experts indicated that the AEs are consistent with the mechanism of action of regorafenib and can be managed in most cases with dose reductions. The clinical experts consulted for this review indicated that hand foot syndrome, mucositis, hypertension, rash and cytopenia were some of the adverse events that should be monitored in patients treated with regorafenib. Both trials a reported higher frequency of these AEs among patients treated with regorafenib. In SARC024 8 patients (36%) in the regorafenib arm experienced hand-foot reactions compared to no patients in the placebo arm. In REGOBONE, 5 patients had dose reductions following hand-foot syndrome. In both trials, most AEs were managed with dose reductions. In the SARC024 trial 59% of patients initially assigned to regorafenib had a dose reduction.

Conclusion

Current treatment options for patients with metastatic osteosarcoma who have received at least one prior therapy are limited to further systemic therapies, presenting a challenge for patients who have contraindications to these agents or who are unable to tolerate further chemotherapy which represents an unmet need for alternative therapeutic options in this patient population. The evidence from two randomized phase II trials comparing regorafenib with placebo in patients with metastatic osteosarcoma, who have received at least one prior line of systemic therapy, suggests that regorafenib may extend progression-free survival. However, there is no evidence that it improves overall survival. Additionally, the effect of regorafenib on health-related quality of life compared to placebo remains uncertain. There were no direct or indirect comparison of regorafenib to other comparators used in the second and subsequent line setting for metastatic osteosarcoma.

Economic Evidence

The economic review consisted of a cost comparison for regorafenib compared with ifosfamide plus etoposide, cyclophosphamide plus topotecan, and docetaxel plus gemcitabine for the treatment of adult and pediatric patients with metastatic osteosarcoma who have received and progressed on at least 1 prior line of therapy.

Based on wholesale list prices, regorafenib is expected to have a per patient cost of \$6,100 per 28-day cycle (Table 1), while ifosfamide plus etoposide is expected to have a per patient cost of \$4,084 per 28 days, cyclophosphamide plus topotecan a per patient cost of \$4,419 per 28 days, and docetaxel plus gemcitabine a per patient cost of \$3,423 per 28 days. The incremental cost of regorafenib compared with ifosfamide plus etoposide, cyclophosphamide plus topotecan, and docetaxel plus gemcitabine is \$2,016, \$1,681, and \$2,677 per patient per 28 days, respectively. As such, the reimbursement of regorafenib for the treatment of patients with metastatic osteosarcoma is expected to increase overall drug acquisition costs. Additional items for consideration are provided in the following bullets:

- Evidence from the REGOBONE⁶ and SARC024⁷ trials suggest that compared to placebo, treatment with regorafenib may result in longer PFS and higher partial response rates. However, its impact on OS remains uncertain, and its effects on HRQoL are unknown. AEs were more frequent in the regorafenib group of both trials. Regorafenib has not been compared to active comparators in the second or subsequent line treatment of metastatic osteosarcoma; therefore, its efficacy relative to ifosfamide plus etoposide, cyclophosphamide plus topotecan, and docetaxel plus gemcitabine is unknown.
- The patent for regorafenib is expected to expire in August 2025.¹⁰ At the time of this review, 2 submissions for generic products were under review by Health Canada.¹¹ As such, 1 or more generic versions of regorafenib may become available. According to the pan-Canadian Pharmaceutical Alliance Tiered Pricing Framework, after 3 months of funding, a single source generic reduces to 55% of the brand reference price.¹² Assuming a price consistent with 55% of the price of the reference brand, the cost of generic regorafenib would be \$3,355 per 28-day cycle, which would be less expensive than its comparator regimens at wholesale list prices. If more than 1 generic product becomes available, the cost of regorafenib would be further reduced.
- According to clinical expert input obtained by CDA-AMC, other tyrosine kinase inhibitors such as cabozantinib, pazopanib, and sorafenib can be used to treat osteosarcoma, however such regimens are not currently publicly funded. The estimated per patient cost of treatment for these comparators ranges from \$3,468 to \$8,436 per 28 days.
- No Canadian cost-effectiveness studies were identified based on a literature search conducted on November 5th, 2024.

Conclusion

The reimbursement of regorafenib for the treatment of adult and pediatric patients with metastatic osteosarcoma who have received and progressed on at least 1 prior line of therapy is expected to increase overall drug acquisition costs. Based on the clinical review conclusions, compared to placebo, regorafenib may extend PFS, although there was no evidence that it improves OS. There were no direct or indirect comparisons of regorafenib with active regimens used in the second and subsequent line setting for metastatic osteosarcoma; as such, the comparative efficacy of regorafenib versus comparators identified is unknown.

Given that regorafenib is associated with increased drug acquisition costs and unknown benefit relative to ifosfamide plus etoposide, cyclophosphamide plus topotecan, or docetaxel plus gemcitabine, reimbursement of regorafenib will add costs to the public health care system with unknown benefit. Therefore, there is insufficient evidence to support a price premium for regorafenib over other treatments used in the second and subsequent line setting for metastatic osteosarcoma. Should 1 or more generic versions of regorafenib become available, its treatment cost may be lower than that of its comparators at list prices.

References

1. Ottaviani G, Jaffe N. The epidemiology of osteosarcoma. *Cancer Treat Res*. 2009;152:3-13. doi:10.1007/978-1-4419-0284-9_1
2. Public Health Agency of Canada. Bone cancer. Accessed January 15, 2025. <https://www.canada.ca/en/public-health/services/chronic-diseases/cancer/bone-cancer.html>
3. Mirabello L, Troisi RJ, Savage SA. Osteosarcoma incidence and survival rates from 1973 to 2004: Data from the Surveillance, Epidemiology, and End Results Program. *Cancer*. 2009;115(7):1531-43. doi:10.1002/cncr.24121
4. Czerniak B. *Dorfman and Czerniak's Bone Tumors, 2nd edition*. Elsevier Health; 2016. Accessed January 15, 2025. <https://www.us.elsevierhealth.com/>
5. Gill J, Gorlick R. Advancing therapy for osteosarcoma. *Nat Rev Clin Oncol*. 2021;18(10):609-624. doi:10.1038/s41571-021-00519-8
6. Duffaud F, Mir O, Boudou-Rouquette P, et al. Efficacy and safety of regorafenib in adult patients with metastatic osteosarcoma: A non-comparative, randomised, double-blind, placebo-controlled, phase 2 study. *Lancet Oncol*. 2019;20(1):120-133. doi:10.1016/S1470-2045(18)30742-3
7. Davis LE, Bolejack V, Ryan CW, et al. Randomized double-blind phase II study of regorafenib in patients with metastatic osteosarcoma. *J Clin Oncol*. 2019;37(16):1424-1431. doi:10.1200/JCO.18.02374
8. A'Hern RP. Sample size tables for exact single-stage phase II designs. *Stat Med*. 2001;20(6):859-66. doi:10.1002/sim.721
9. Lagmay JP, Krailo MD, Dang H, et al. Outcome of patients with recurrent osteosarcoma enrolled in seven phase II trials through Children's Cancer Group, Pediatric Oncology Group, and Children's Oncology Group: Learning from the past to move forward. *J Clin Oncol*. 2016;34(25):3031-8. doi:10.1200/JCO.2015.65.5381
10. Health Canada. Patent register. Accessed January 22, 2025. <https://pr-rdb.hc-sc.gc.ca/pr-rdb/index-eng.jsp>
11. Health Canada. Generic submissions under review. Accessed January 22, 2025. <https://www.canada.ca/en/health-canada/services/drug-health-product-review-approval/generic-submissions-under-review.html#a7>
12. pan-Canadian Pharmaceutical Alliance. Generic drugs: pan-Canadian tiered pricing framework. Accessed January 22, 2025. <https://www.pcpacanada.ca/generic-drug-framework>