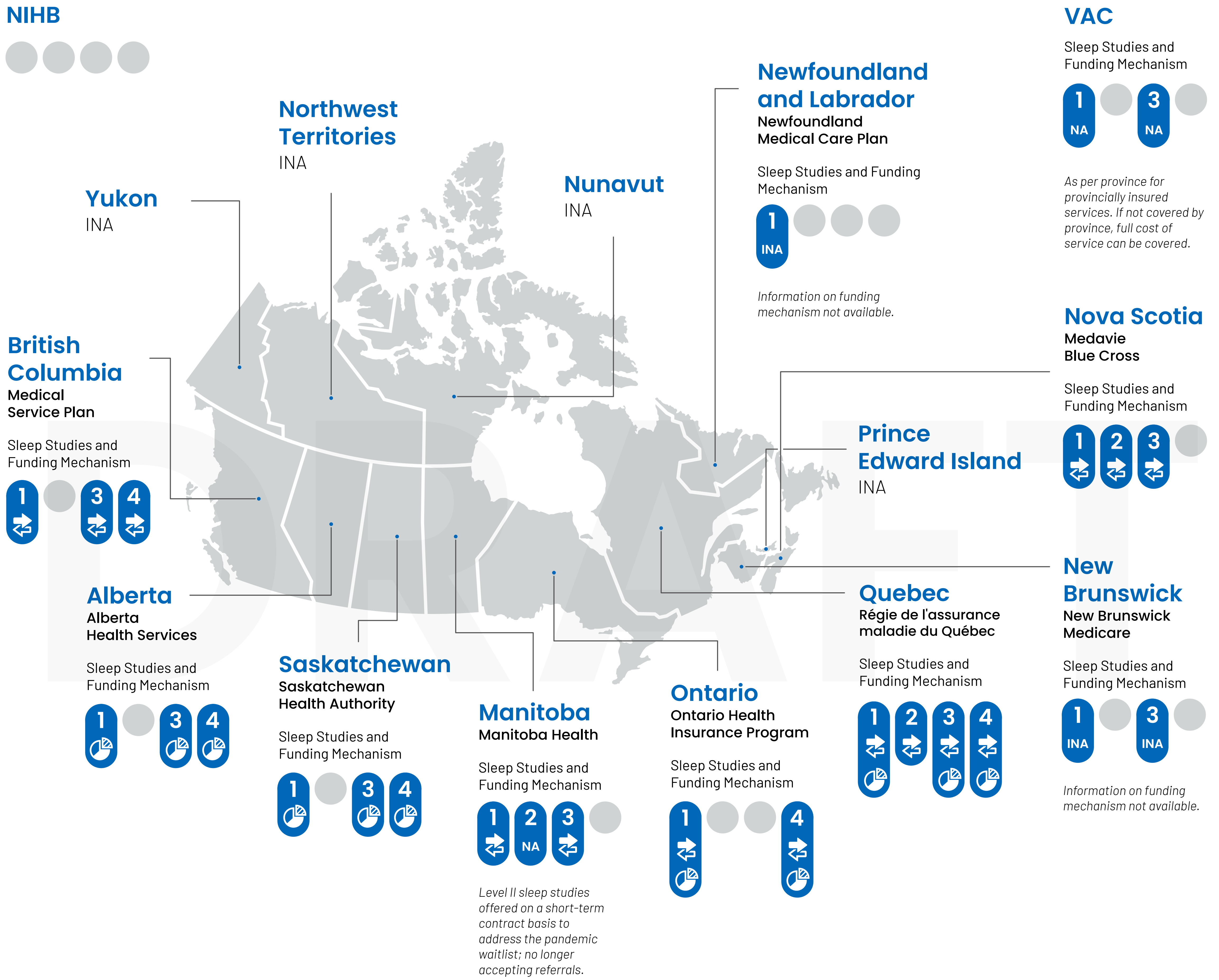


# Reimbursement of Sleep Studies for Diagnosis Across Canada (DRAFT)

An Environmental Scan on coverage of sleep studies is being conducted. This Environmental Scan is based on a review of published and grey literature as well as survey responses from payers and providers. This scan aims to identify which levels of sleep studies (I to IV) are covered by which public plans and how. This graphic depicts the details of the landscape of reimbursement for diagnostic sleep studies across Canada.



## Legend

Sleep Studies		Funding Mechanisms	
<b>1</b>	PSG, in lab, attended.		Fee for Service
<b>2</b>	PSG, at home, unattended.		Global Budget
<b>3</b>	HSAT, at home, unattended.		
<b>4</b>	Sleep apnea screening with oximetry, at home, unattended.		

**HSAT** = home sleep apnea test  
**INA** = information not available  
**NA** = not applicable  
**NIHB** = Non-Insured Health Benefits  
**PSG** = polysomnography  
**VAC** = Veterans Affairs Canada

■ Disclaimer